

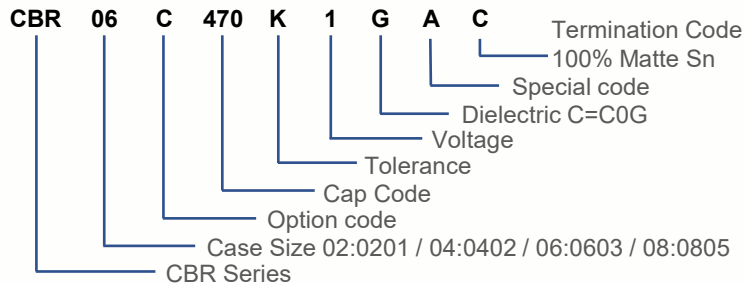
Overview

HiQ CBR Commercial Grade, RF, and Microwave series features a copper electrode BME (Base Metal Electrode) system that offers ultra-low ESR and High Q in the VHG, UHF, and microwave frequency bands. Low ESR allows for higher RF currents which are ideal for applications such as cellular base stations and telecommunication networks.

Benefits

- Base Metal Electrode (BME) dielectric system
- High thermal stability
- 0201, 0402, 0603, and 0805 case sizes
- Pb-free and RoHS compliant
- Ideal for high frequency applications
- Negligible capacitance change with respect to temperature

Part Number System

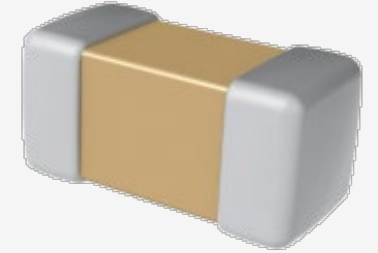


Electrical Characteristics

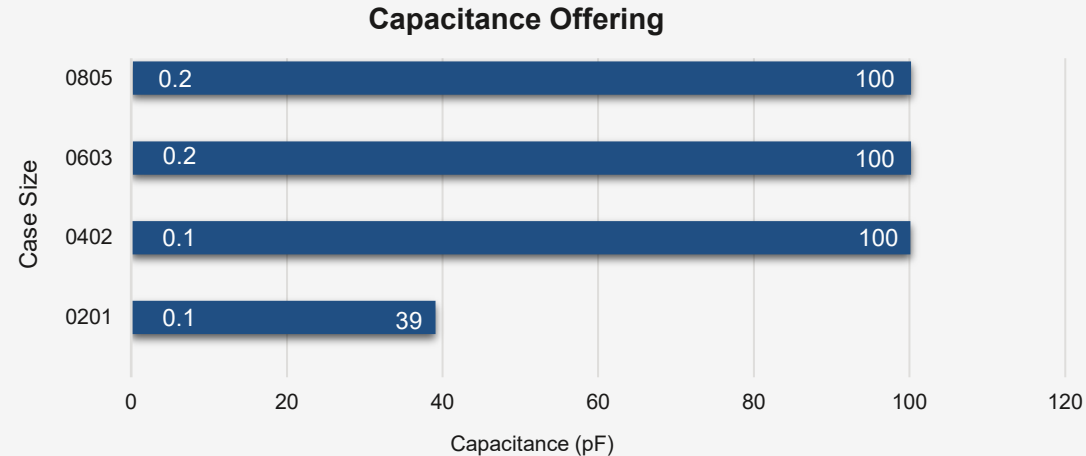
- 1 MHz to 50 GHz frequency range
- Operating Temperature: -55°C to 125°C
- Capacitance offerings: 0.1 pF to 100 pF
- DC voltage ratings: 6.3 V to 500 V

Features

- Ultra-low ESR
- High Q
- High SRF
- VHF, Microwave, mmWave



Characteristics



Applications

- RF power amplifiers (PA)
- Cellular base stations (4G, 5G)
- Wireless LAN
- Telecommunications networks
- GPS
- Bluetooth
- Bypass, coupling, filtering, impedance matching, DC blocking

Design Support

- Substrate Scalable Models (Modelithics)
- Downloadable S-Parameters

<https://www.kemet.com/en/us/capacitors/ceramic/hiq-cbr.html>