

HiQ-CBR Automotive Series, RF & Microwave

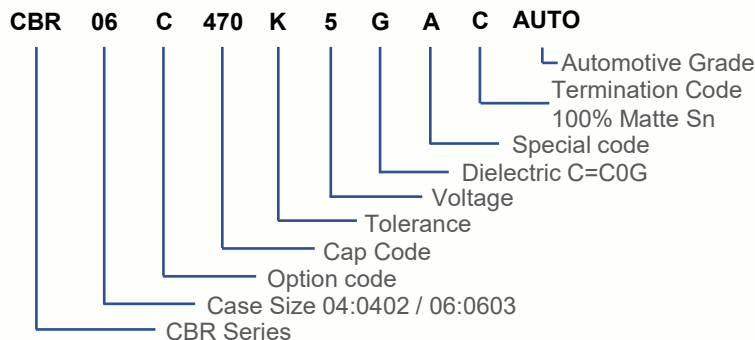
Overview

HiQ CBR Automotive Grade, RF, and Microwave series features a copper electrode BME (Base Metal Electrode) system that offers ultra-low ESR and High Q in the VHF, UHF, and microwave frequency bands. Low ESR allows for higher RF currents which are ideal for applications such as V2X, safety systems, power train and automotive communication systems.

Benefits

- AEC-Q200 qualified
- Base Metal Electrode (BME) dielectric system
- High thermal stability
- 0402 and 0603 case sizes
- Pb-free and RoHS compliant
- Ideal for high frequency applications
- Negligible capacitance change with respect to temperature

Part Number System

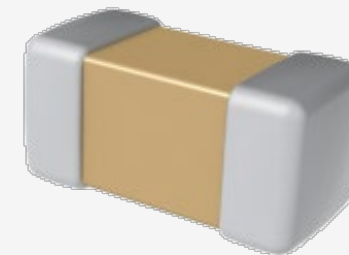


Electrical Characteristics

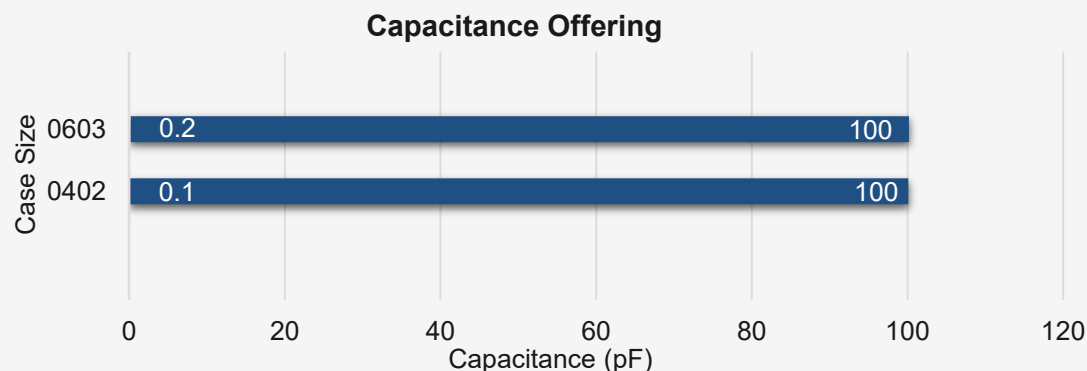
- 1 MHz to 50 GHz frequency range
- Operating Temperature: -55°C to 125°C
- Capacitance offerings: 0.1 pF to 100 pF
- DC voltage ratings: 50 V

Features

- Ultra-low ESR
- High Q
- High SRF
- VHF, Microwave, mmWave



Characteristics



Applications

- V2X
- Safety systems
- Power train
- Automotive communications systems
- Bypass, coupling, filtering, impedance matching, DC blocking

Design Support

- Substrate Scalable Models (Modelithics)
- Downloadable S-Parameters

<https://www.kemet.com/en/us/capacitors/ceramic/hiq-cbr.html>