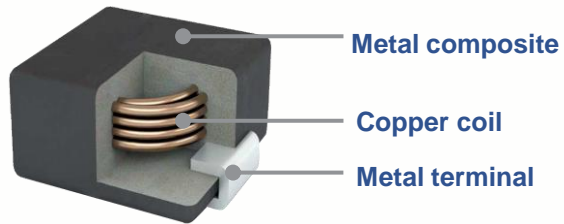


Overview

METCOM power inductors are ideal for automotive designs using DC to DC switching power supplies as well as EMI filter. KEMET's metal composite has high saturation characteristics ideal for applications requiring stable inductance across temperature and current.

The high heat resistance propriety of the inductor has been further improved and allows for operating temperature up to +180°C with outstanding performance on the insulation resistance.

Construction



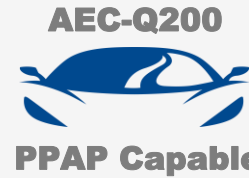
Benefits

- Metal composite powder
- Shielded construction, SMD configuration
- Inductance range from 0.47 to 47 μH
- Operating temperature up to +180°C
- Low acoustic noise
- Low magnetic flux leakage
- AEC-Q200 qualified

METCOM MPEV Series

Electrical Characteristics

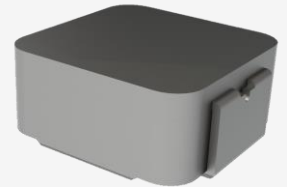
- Rated inductance range: 0.47 to 47 μH at 100 kHz ($\pm 20\%$ tol.)
- Rated DCR: 2.4 to 186.3 m Ω maximum
- Rated current range: 2.7 to 26.4 A
- Operating temperature: -55°C to +180°C



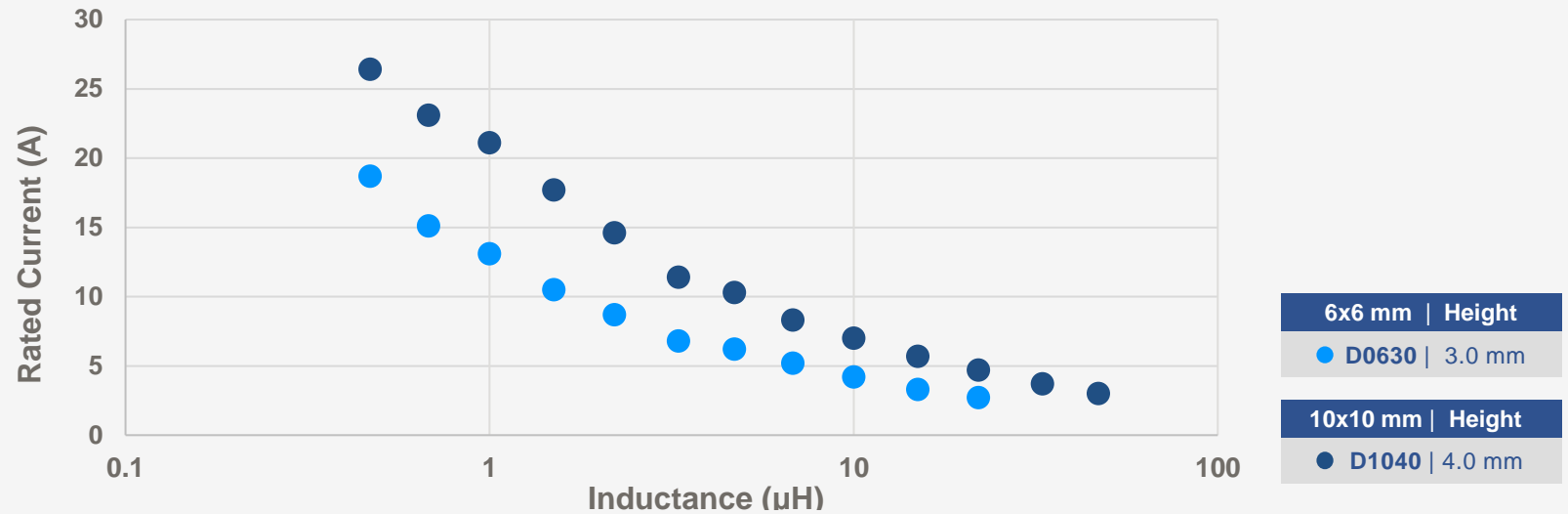
D0630



D1040



Selection Guide



Applications

- Engine control units (ECU)
- LED headlights
- Meter cluster panels
- Head-up displays (HUD)
- Electric water pumps (EWP)
- Electric oil pumps (EOP)
- Electric power steering (EPS)

