

Radial version (PEH)

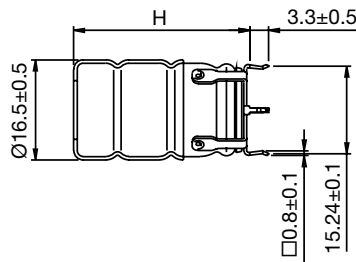
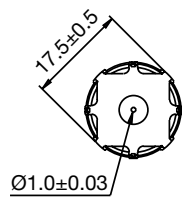


of PEG126 and PEG220-226

- For specifications and electrical data, please see pages 30 to 38.
All articles in axial version, case code F and G, are available also in radial version.

Dimensions table PEH 126 (mm)

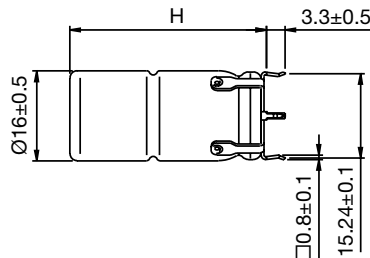
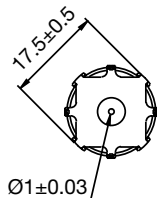
D x L	Case code	D ±0.5	H ± 1	Weight approx (g)
16 x 31	F	16.5	31	8
16 x 39	G	16.5	39	11



d x L	Case Code	H ± 1
16 x 31	F	31
16 x 39	G	39

Dimensions table PEH220-226 (mm)

D x L	Case code	D ±0.5	H ± 1	Weight approx (g)
16 x 27	F	16.0	27.5	8
16 x 35	G	16.0	35.5	11



d x L	Case Code	H ± 1
16 x 27	F	27.5
16 x 35	G	35.5

ORDERING INFORMATION

For further ordering information please see page 8.

Pos 1-20

P	E	H	X	X	X	K	D	3	1	5	0	Q	E	1					
1	2	3	4	5	6	7	8	9	10	11	12	13	14	15	16	17	18	19	20

Capacitance tolerances:
Pos. 13: Q: -10 to +30%
M: -20 to +20%

E1: Packed in boxes

Quantities and weights

CASE CODE	F	G
Weight approx (g)	8	11
Standard box quantity	100	100

Statements of suitability for certain applications are based on our knowledge of typical operating conditions for such applications, but are not intended to constitute – and we specifically disclaim – any warranty concerning suitability for a specific customer application or use. This Information is intended for use only by customers who have the requisite experience and capability to determine the correct products for their application. Any technical advice inferred from this Information or otherwise provided by us with reference to the use of our products is given gratis, and we assume no obligation or liability for the advice given or results obtained.