

# Power Line Filters

## F.LL.E2 series - SR type

### Shielded rooms & secure areas

The SR series of filters are designed typically for use in shielded compartment type screened rooms, secure communications areas and MRI screened facilities.

All models are manufactured to the industry standard performance range and are to a high quality, robust construction.

Each filter is designed for direct mounting through the wall of a room, bulkhead or cabinet via a threaded mounting pipe .

- Current ratings from 1A to 100A
- Industry standard high attenuation performance
- Direct mounting via pipe outlet
- Robust, quality construction
- 30A to 100A models can also be used in multiples for 3 phase and 3 phase + neutral applications



### Mechanical Specifications

Manufacture: Nickel Plated steel case 1mm thick  
Internal components sealed with self-extinguishing resin

Connections: Line: (see table)  
Load: (see table) tri-rated cable

Mounting: Penetration pipe (see table)

### Electrical Specifications

Rated voltage ( $V_R$ ): (see table) Vac 50/60Hz  
Rated current ( $I_R$ ): (see table) referred to 40°C  
Leakage current ( $I_L$ ): (see table) A @ (see table) Vac 50Hz  
Voltage test ( $2_s$ ): line to ground 2700Vdc  
(Neons disconnected where applicable)  
line to line 1700Vdc

Climatic category: HPF (25/085/21):  
Temperature range: -25°C to +85°C

Line to Ground Capacitors(C):(see table) per phase

Line Resistance(R): < (see table) mΩ

Neons: Fitted with ring tags for connection /disconnection

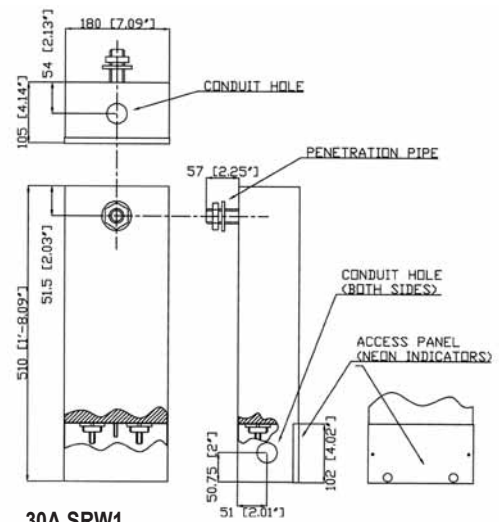
### Filter Range

Code	$V_R$ (Vac)	$I_R$ (A)	$I_L$ (A)	C (μF)	R (mΩ)	Neons	Penetration pipe	Termination Line	Load cables
F.LL.E2.001A.SR.W2	250	1	0.002 0.023 @ 220V	800	-	M25	Solder*	20 AWG x 450	
F.LL.E2.005A.SR.W2	250	5	0.002 0.023 @ 220V	150	-	M25	Solder**	18 AWG x 450	
F.LL.E2.030A.SR.W2	250	30	0.183 2 @ 220V	6	-	M25	M6	12 AWG x 500	
F.LL.E2.030A.SR.W1	480	30	2.29 20 @ 277V	14	2	1" NPSL	M6	10 AWG x 700	
F.LL.E2.060A.SR.W1	480	60	2.29 20 @ 277V	5.5	2	1" NPSL	M8	6 AWG x 700	
F.LL.EU.100A.SR.W1	277	100	4.96 @ 277V	43.2	3.2	1" NPSL	M10	2 AWG x 700	

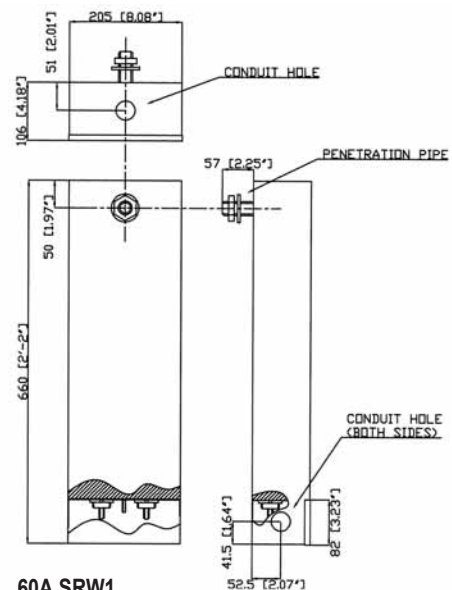
\*Wiretag accepts 0.75mm<sup>2</sup> Note: NPSL = National Pipe Straight Locknut

\*\*Wiretag accepts 1mm<sup>2</sup>

### Dimensions (mm) and connections

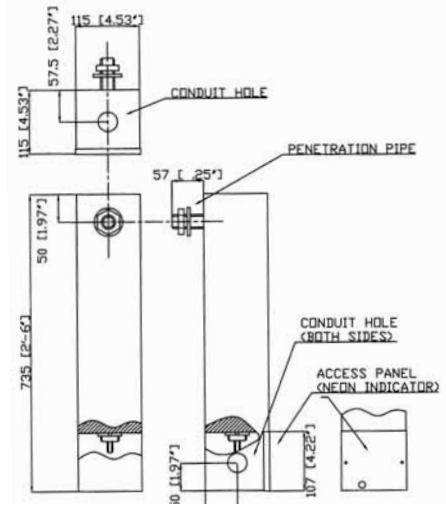


30A SRW1

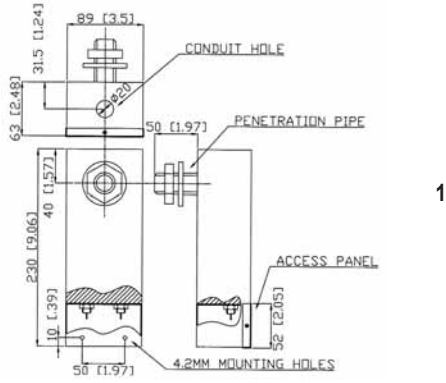


60A SRW1

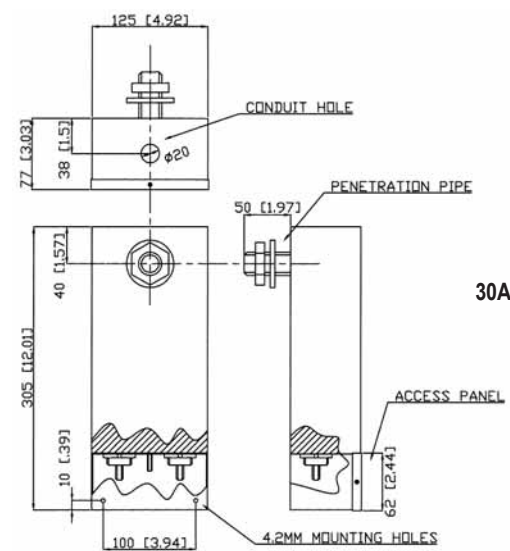
Dimensions (mm) and connections



100A SRW1

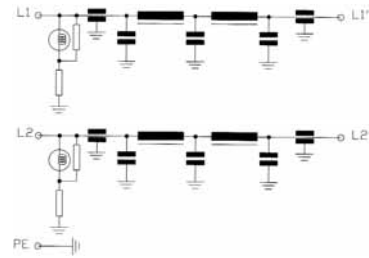


1A & 5A SRW2

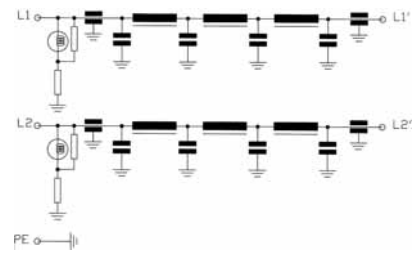


30A SRW2

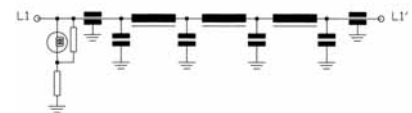
Circuit diagram



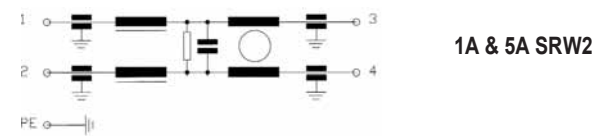
30A SRW1



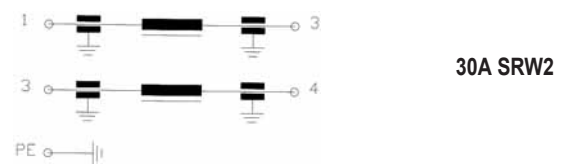
60A SRW1



100A SRW1

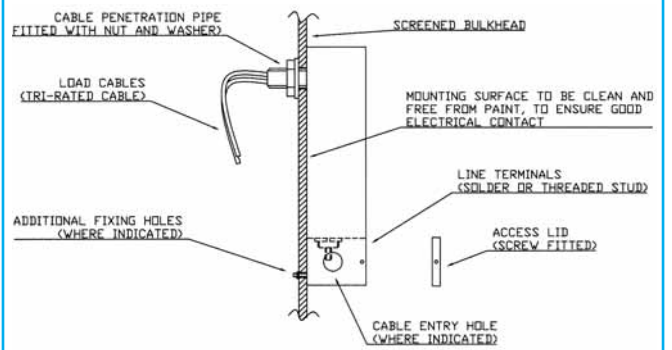


1A & 5A SRW2



30A SRW2

Mounting diagram



FOR INDIVIDUAL DIMENSIONS, TERMINATIONS AND MOUNTING OPTIONS - SEE INDIVIDUAL SPECIFICATIONS

CONTACT US

[www.kemet.com](http://www.kemet.com)