

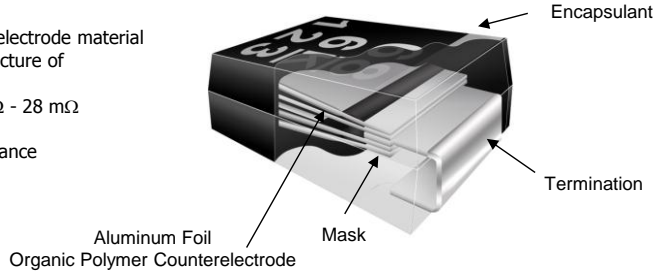
KEMET Surface Mount Aluminum

Revision E, 03 January 13

Note: Information subject to change without notice. Monitor website regularly for updates.
KEMET is not liable for any damages, direct or indirect, consequential or otherwise, that the reader might incur as a result of ignoring this warning, or that any third party might suffer as a result of the reader's ignoring this warning.

Characteristics and Typical Construction

- Organic polymer counterelectrode material
- Product supports manufacture of RoHS-compliant EEE
- Extremely low ESR, 7 mΩ - 28 mΩ
- 2 - 10 Volts
- ± 20% Capacitance tolerance
- Tape & Reel Packaging



RoHS Restricted Substance Content

Key for Determining Adherence to China RoHS and EU 2011/65/EU Content Criteria¹
 ○ = ≤ MCV, ✕ = > MCV, ✕ = > MCV, but EU RoHS Compliant with Exemption(s)

Material and MCV ¹	Restricted Material						Compliant Version		China RoHS Symbol ²
	Cd	Cr ⁶⁺	Pb	Hg	PBB	PBDE	Available since	Standard since	
KEMET Product Series	< 0.01%	< 0.1%	< 0.1%	< 0.1%	< 0.1%	< 0.1%			
Aluminum Surface Mount A700	○	○	○	○	○	○	Dec-02	Dec-02	⓪

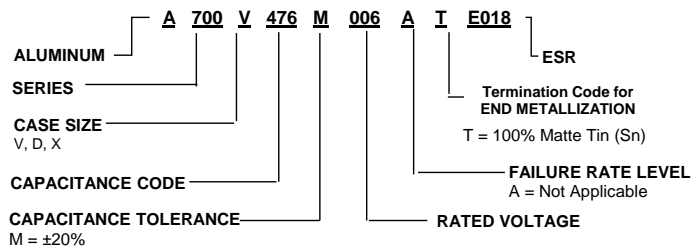
¹ MCV = Maximum Concentration Values per 2011/65/EE and China RoHS criteria.
² China RoHS Symbol based on current manufacturing. Refer to notes in Pb column for transition dates.

Soldering Capability Characteristics

	Matte Tin Termination	SnPb Termination
Termination Material	CDA Copper Alloy 194	SnPb Termination not currently offered for this product.
Termination Plating (Barrier)	100% Matte Tin (Nickel)	
Peak Temperature Capability	PWC ≥ 605, 260°C, PWC < 605, 250°C	
Soldering Process Compatibility	Backward & Forward Compatible	
MSL Rating	3	
Tin Whisker Test Results <i>based on JESD22-A121 and JESD201³</i>	Class 2	

³ Per EIA/ECA component bulletin CB19, tin whiskering is not considered a reliability risk within the capacitor industry for non-Military / Hi-Rel applications.

Ordering



Identification

Reel level **KEMET EZ ID** label indicates product content relative to substance restrictions of the EU RoHS Directive, 2011/65/EU and China RoHS.
RoHS-PRC = Meets criteria without exemption
RoHS-EU = Meets criteria with exemption
RoHS-NO = Does not meet criteria

